



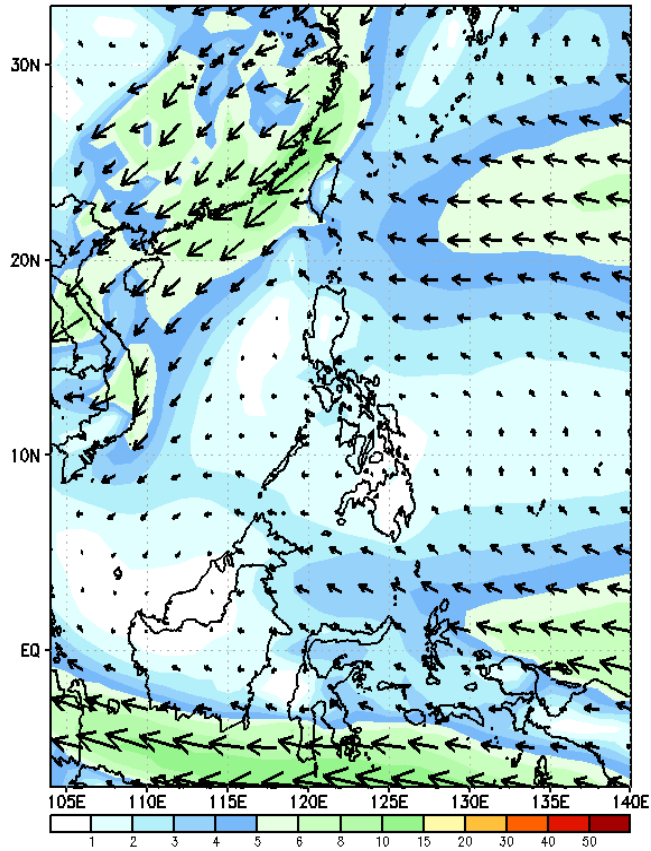
# Week 1 & Week 2 Forecast for the Philippines using GEFS Model



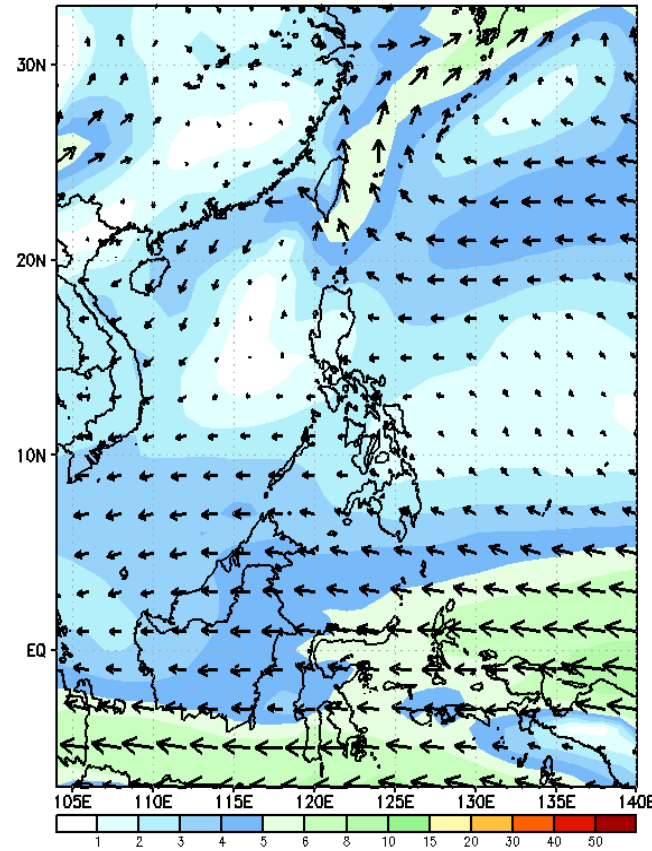
# GEFS Week-1 Wind Forecasts:

Week 1: Oct 02 - 08, 2024

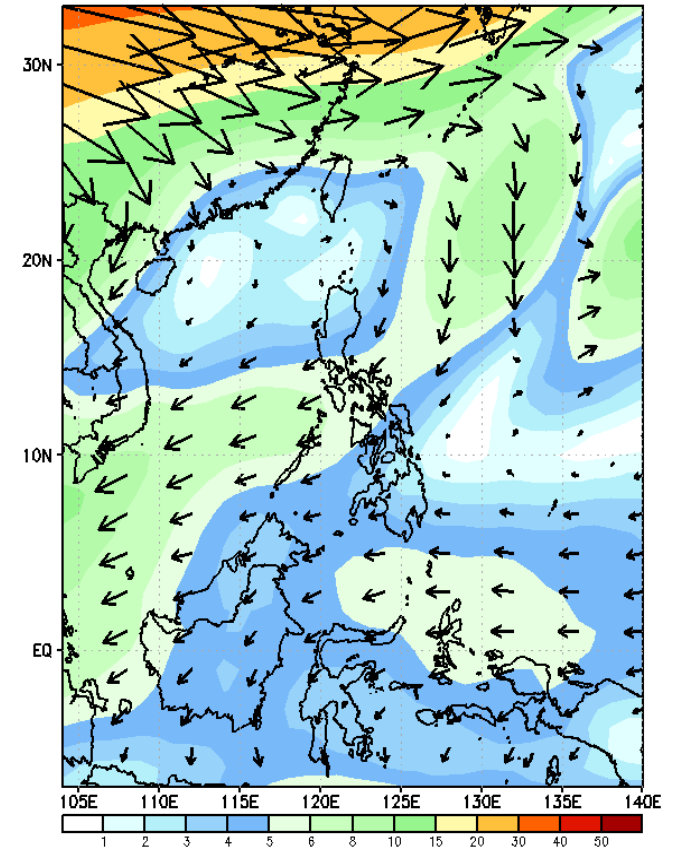
GEFS Week-1 850-hPa Wind Total  
Valid: 20241002 - 20241008



GEFS Week-1 700-hPa Wind Total  
Valid: 20241002 - 20241008

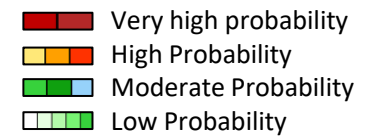


GEFS Week-1 200-hPa Wind Total  
Valid: 20241002 - 20241008



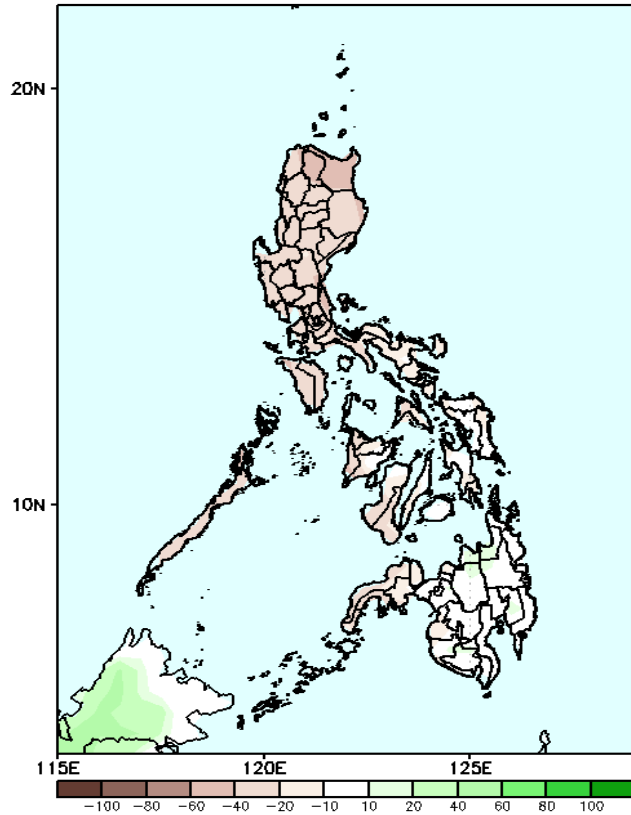
Easterlies affecting most parts of the country.

# Precipitation Anomaly and Exceedance Probability > 25/50 mm



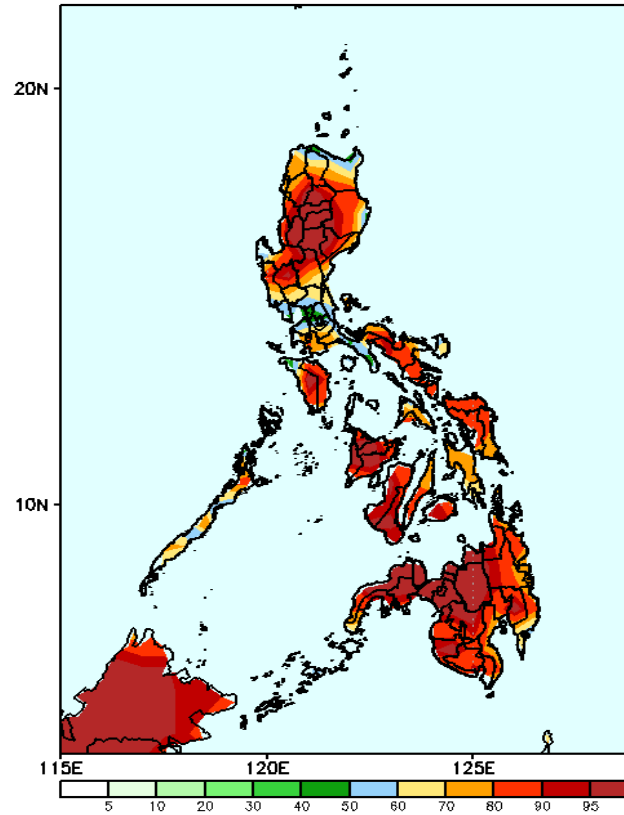
**Week 1: Oct 02 - 08, 2024**

GEFS Week-1 Precip Anomaly  
Valid: 20241002 - 20241008



Rainfall deficit of 20-40mm is likely in most parts of Luzon, Visayas and Zamboanga Peninsula.

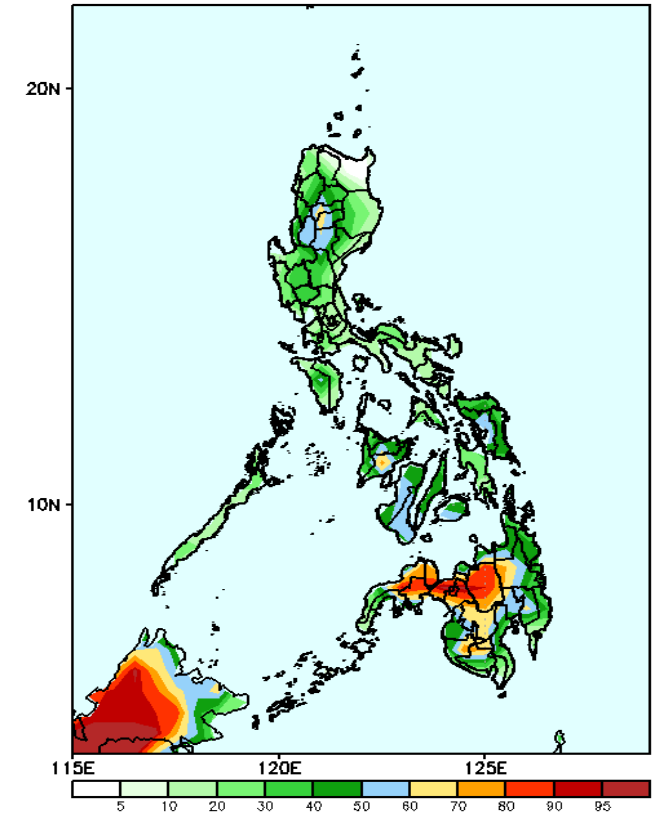
GEFS Week-1 Exceedance Prob. > 25mm  
Valid: 20241002 - 20241008



**Probability to Exceed 25mm**

- High to very high over most parts of CAR and most of Visayas and Mindanao;
- Low to moderate over the rest of the Luzon.

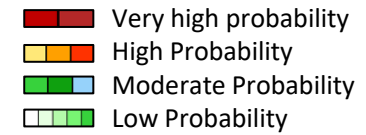
GEFS Week-1 Exceedance Prob. > 50mm  
Valid: 20241002 - 20241008



**Probability to Exceed 50mm**

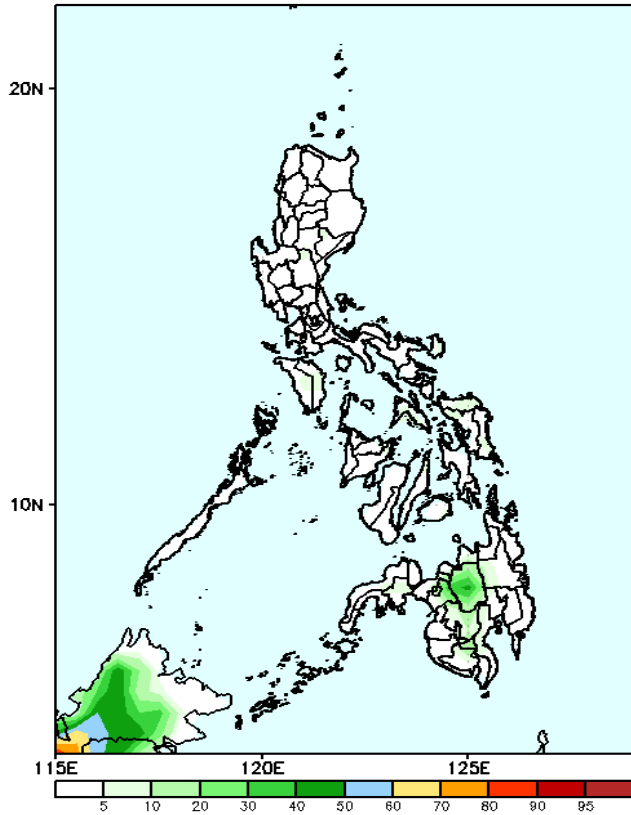
- Moderate to high over Benguet, Mountain Province, Ifugao, Nueva Vizcaya, Iloilo and most parts of Mindanao;
- Low to moderate over the rest of the country.

# Exceedance Probability > 100/150/200 mm



Week 1: Oct 02 - 08, 2024

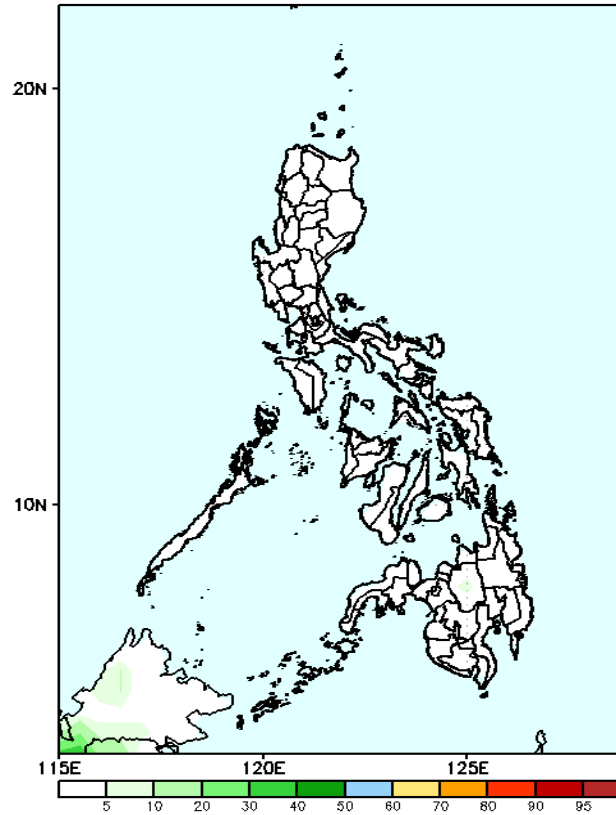
GEFS Week-1 Exceedance Prob. > 100mm  
Valid: 20241002 - 20241008



### Probability to Exceed 100mm

- Low to moderate over Bukidnon;
- Low over the rest of the country.

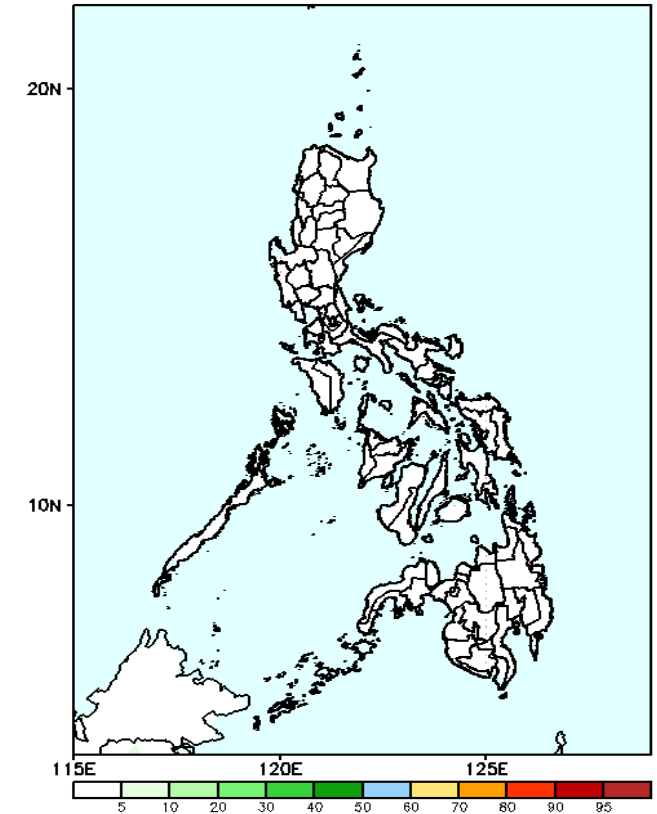
GEFS Week-1 Exceedance Prob. > 150mm  
Valid: 20241002 - 20241008



### Probability to Exceed 150mm

- Low across the country.

GEFS Week-1 Exceedance Prob. > 200mm  
Valid: 20241002 - 20241008



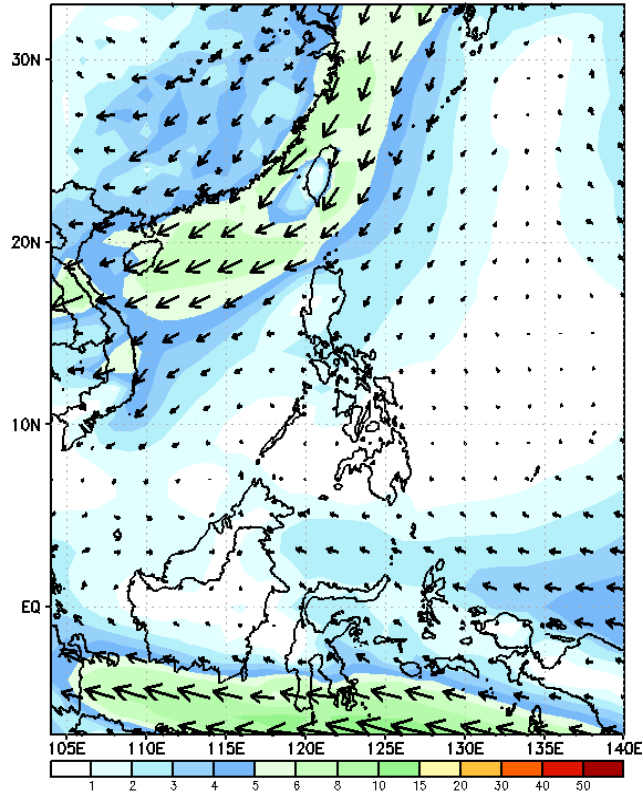
### Probability to Exceed 200mm

- Low across the country.

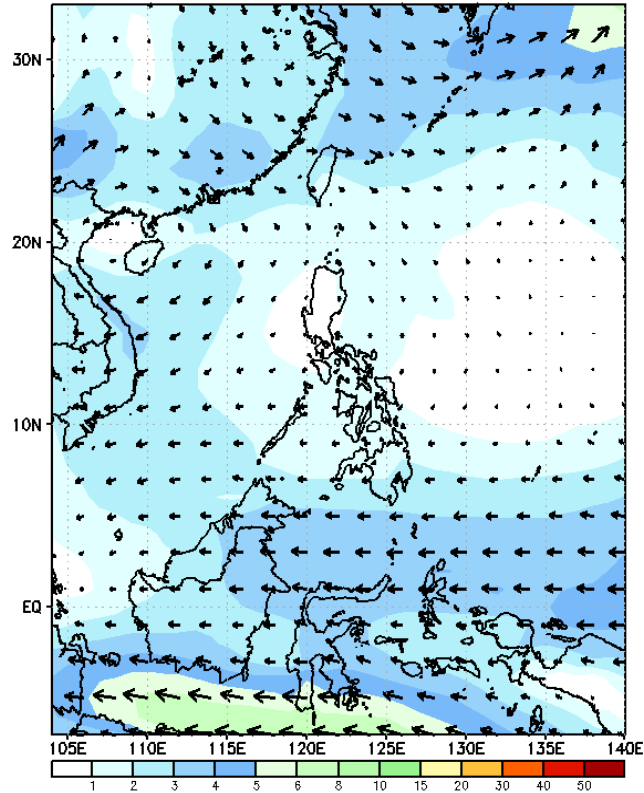
# GEFS Week-2 Wind Forecasts:

Week 2: Oct 09 - 15, 2024

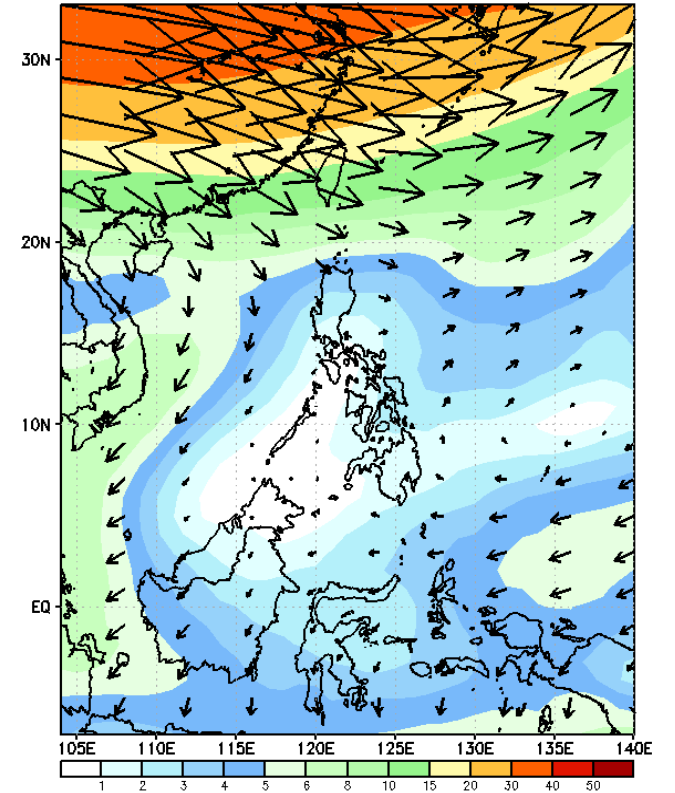
GEFS Week-2 850-hPa Wind Total  
Valid: 20241009 - 20241015



GEFS Week-2 700-hPa Wind Total  
Valid: 20241009 - 20241015

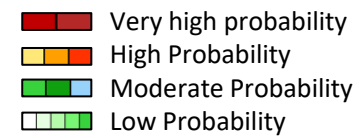


GEFS Week-2 200-hPa Wind Total  
Valid: 20241009 - 20241015



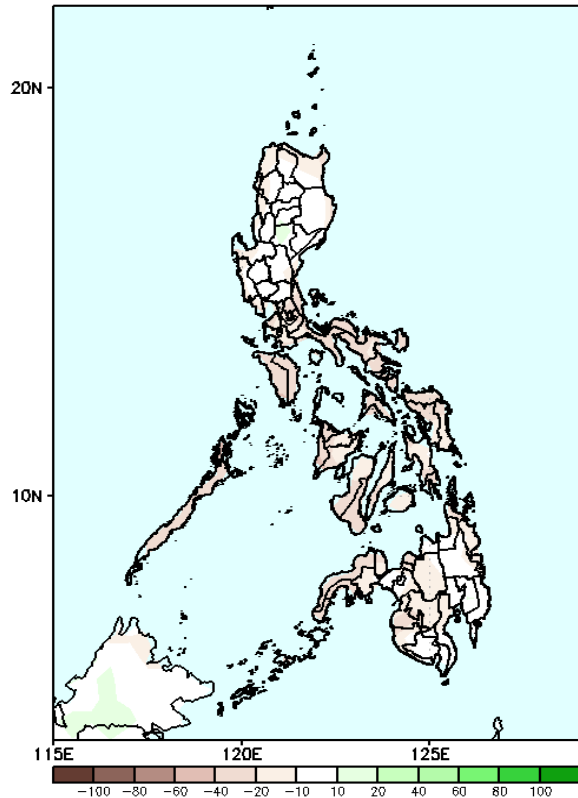
Easterlies affecting most parts of the country.

# Precipitation Anomaly and Exceedance Probability > 25/50 mm

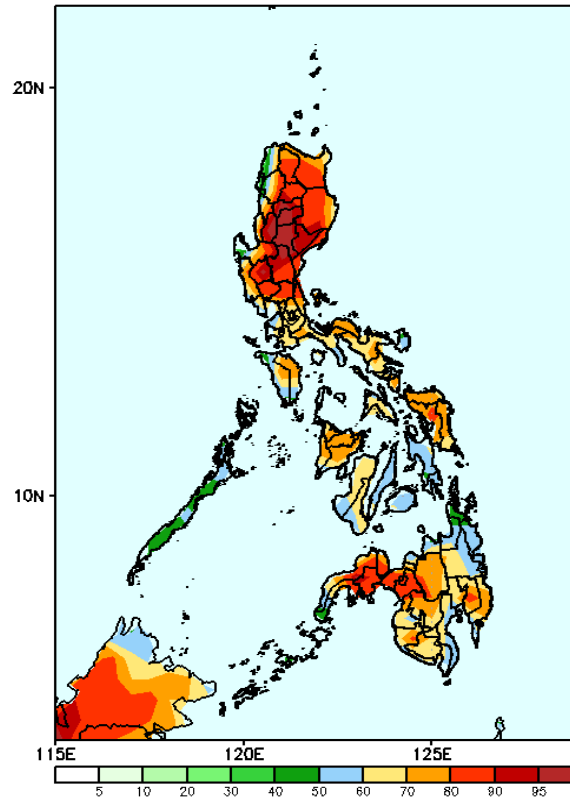


Week 2: Oct 09 - 15, 2024

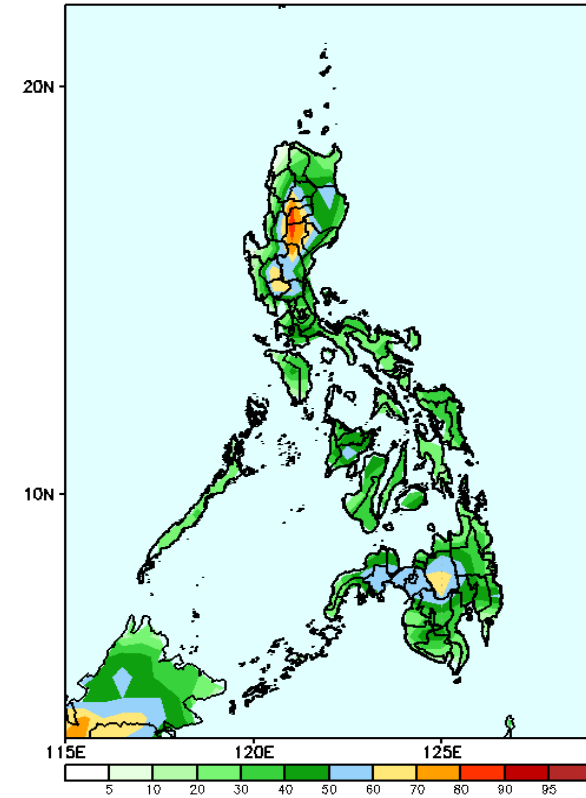
GEFS Week-2 Precip Anomaly  
Valid: 20241009 - 20241015



GEFS Week-2 Exceedance Prob. > 25mm  
Valid: 20241009 - 20241015



GEFS Week-2 Exceedance Prob. > 50mm  
Valid: 20241009 - 20241015



Rainfall deficit of 10-20mm is likely over most parts of the country.

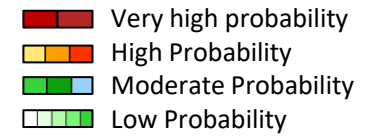
## Probability to Exceed 25mm

- High to very high over most of CAR, Cagayan Valley Region and Central Luzon;
- Moderate to high over the rest of the country.

## Probability to Exceed 50mm

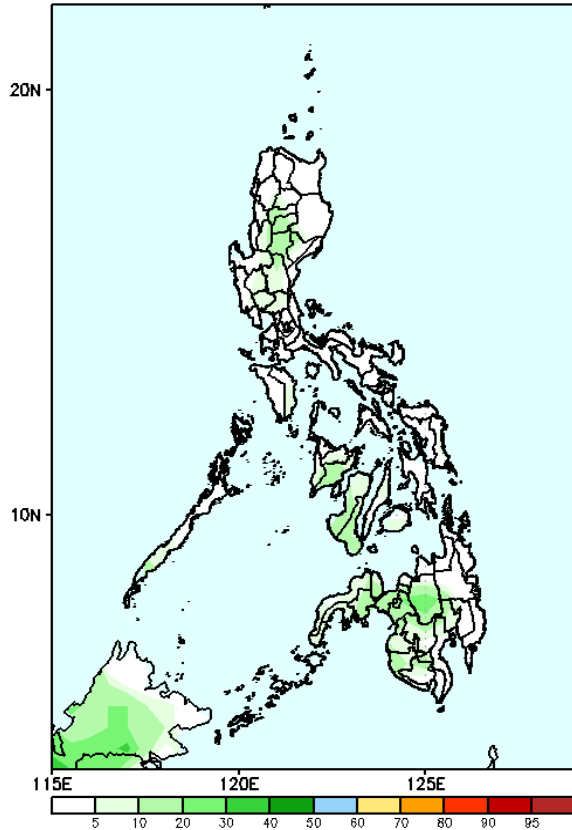
- Moderate to high over the central part of Northern and Central Luzon and Bukidnon;
- Low to moderate over the rest of the country.

# Exceedance Probability > 100/150/200 mm



Week 2: Oct 09 - 15, 2024

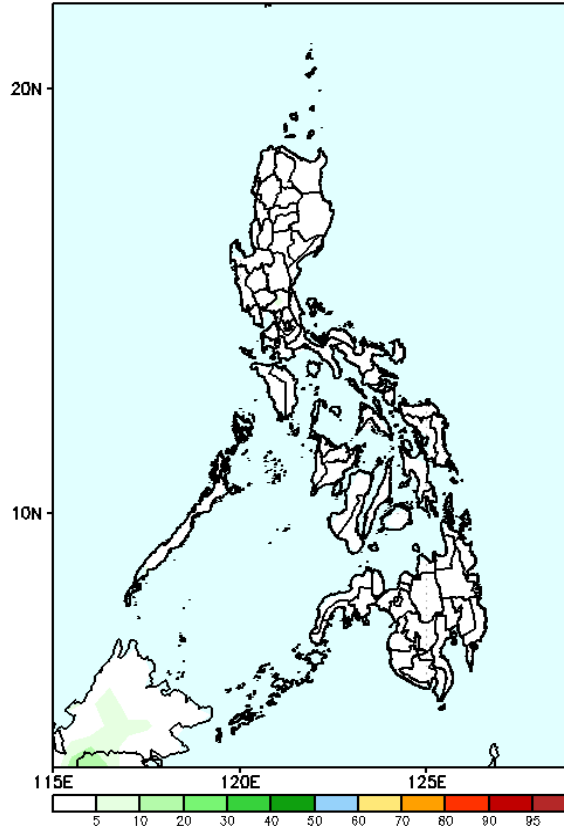
GEFS Week-2 Exceedance Prob. > 100mm  
Valid: 20241009 - 20241015



**Probability to Exceed 100mm**

- Low across the country.

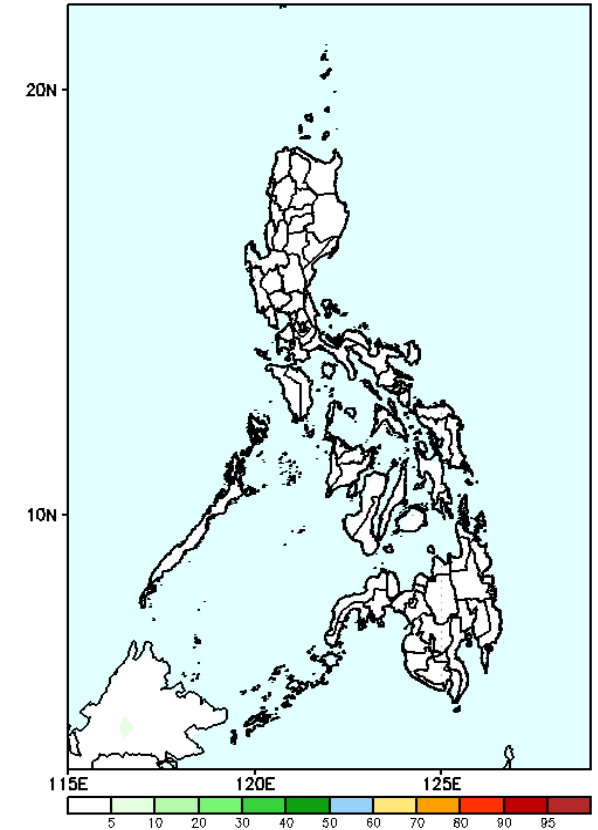
GEFS Week-2 Exceedance Prob. > 150mm  
Valid: 20241009 - 20241015



**Probability to Exceed 150mm**

- Low across the country.

GEFS Week-2 Exceedance Prob. > 200mm  
Valid: 20241009 - 20241015

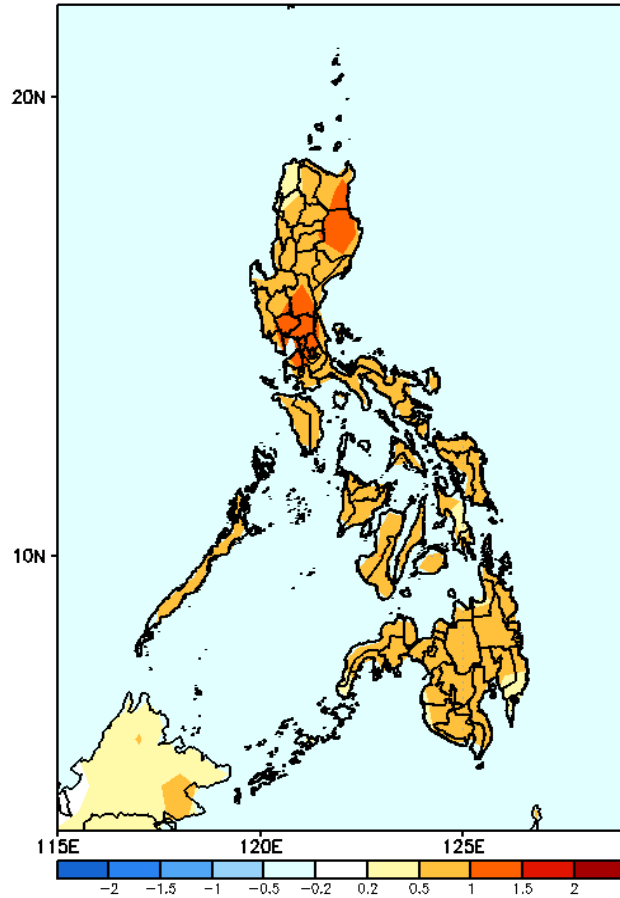


**Probability to Exceed 200mm**

- Low across the country.

# GEFS Week-1 & 2 Forecasts: T2m Anomaly

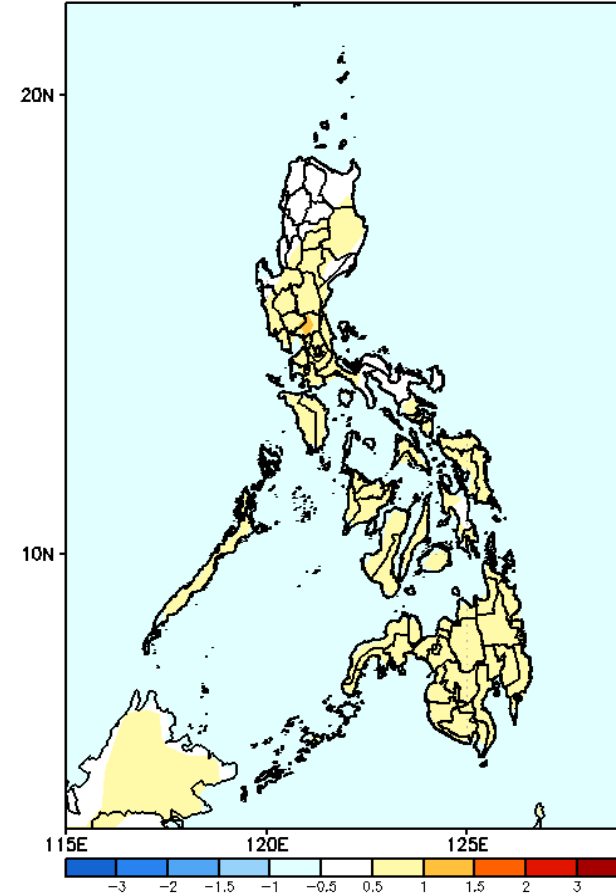
GEFS Week-1 T2m Anomaly  
Valid: 20241002 - 20241008



## 2m Temperature Week 1: Oct 02 - 08, 2024

Slightly warmer to warmer than average surface air temperature will likely be experienced in most parts of the country.

GEFS Week-2 T2m Anomaly  
Valid: 20241009 - 20241015



## 2m Temperature Week 2: Oct 09 - 15, 2024

Slightly warmer average surface air temperature will likely be experienced in most parts of Luzon and Visayas.